

ENSTO

PRODUCT SPECIFICATION

2/25/2019

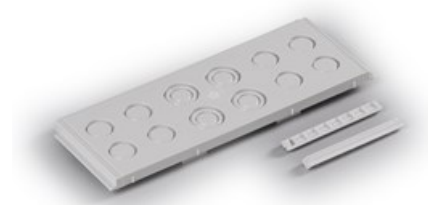


6418677172489

PKOP4.1

Knockout plate

Code PKOP4.1
 GTIN 6418677172489
 ENumber
 Name Knockout plate Ensto Cubo P
 knockout plate, 400 mm side, 8 x Pg16 + 4
 x Pg11/21 + 2 x Pg 29, PC
 Description Accessory for Ensto Cubo P panel building
 system



Technical specification

Dimensions

Weight: 0.19 kg
 Volume : 36.68 cm³
 Size: 351 x 95 x 11

Materials

Material: Polycarbonate

Colors

Color: Grey

Ratings

ETIM 7: EC000211 Gland plate for small distribution
 boards/switchgear cabinets

ETIM

ETIM

Width: 400 mm
 Pre-stamping: true
 Material: Plastic
 Height: 80 mm
 Surface protection: Untreated
 Model: Cable screw gland

Packaging

Default package

Unit:	PCS
Size:	1
Length:	30 mm
Width:	200 mm
Height:	450 mm
Weight (net):	0.0019 kg
Weight (brt):	0.1919 kg
Volume:	2.7