

ENSTO

PRODUCT SPECIFICATION

2/21/2019

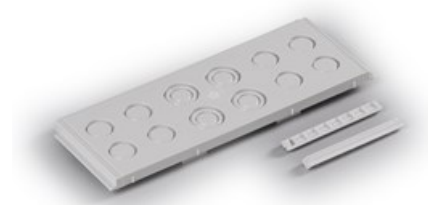


6418677172458

PKOP3.1

Knockout plate

Code PKOP3.1
 GTIN 6418677172458
 ENumber
 Name Knockout plate Ensto Cubo P
 knockout plate, 300 mm side, 8 x Pg16 + 4
 x Pg11/21, polycarbonate
 Description Accessory for Ensto Cubo P panel building
 system



Technical specification

Dimensions

Weight: 0.13 kg
 Volume : 23.72 cm³
 Size: 227 x 95 x 11

Materials

Material: Polycarbonate

Colors

Color: Grey

Ratings

ETIM 7: EC000211 Gland plate for small distribution
 boards/switchgear cabinets

ETIM

ETIM

Width: 300 mm
 Pre-stamping: true
 Material: Plastic
 Height: 80 mm
 Surface protection: Untreated
 Model: Cable screw gland

Packaging

Default package

Unit:	PCS
Size:	1
Length:	30 mm
Width:	200 mm
Height:	350 mm
Weight (net):	0.0018 kg
Weight (brt):	0.1318 kg
Volume:	2.1