



PRODUCT SPECIFICATION

2/20/2019



6418677166228

PPCF303010B4

Ensto Cubo P base

Code PPCF303010B4

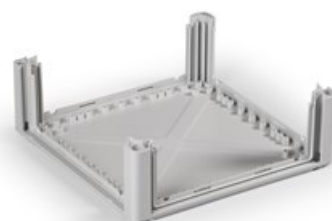
GTIN 6418677166228

ENumber

Name Ensto Cubo P base

Size 300 x 300 mm, with 4 openings, PC

Description Ensto Cubo P is a panel building system designed on one base part and available in four sizes. The base part is totally open in all four directions and enables fast and efficient mounting of the panel parts. The system includes a wide range of accessories.



Technical specification

Technical specification

Content: Base and corner support, set

Dimensions

Weight: 0.70 kg
 Width: 300 mm
 Volume : 918.00 cm³
 Size: 300 x 300 x 102
 Height: 300 mm
 Depth: 102 mm

Temperatures

Short term temperature range: -40 ... +120 °C

Materials

Base: Fiberglass reinforced polycarbonate
 Cover screws: Polyamide
 Material selection: Polycarbonate

Colors

Color: Grey

Certificates

Standards: EN 60439, EN 62208

Ratings

ETIM 7: EC000261 Enclosure/switchgear cabinet (empty)

ETIM

ETIM

Width: 300 mm

Impact strength: IK08

Suitable for outdoor set-up: true

Degree of protection (IP): IP67

Wall fastening possible: true

Height: 300 mm

Surface finishing: Untreated

RAL-number: 7035

Depth: 102 mm

Colour: Grey

Material: Plastic

Mounting plate depth-adjustable: true

Packaging

Default package

Unit: PCS

Size: 8

Length: 620 mm

Width: 450 mm

Height: 345 mm

Weight (net): 0.85 kg

Weight (brt): 6.49 kg

Volume: 96.255