

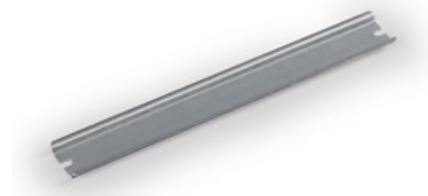
# ENSTO

DIN rail

DR35550.5

---

Code DR35550.5  
 GTIN 6438100113155  
 Name DIN rail Ensto Cubo O  
 For 600 mm side, width 35 mm, DIN  
 46277/3  
 Description Accessory for Ensto Cubo O and C  
 thermoplastic enclosures and Ensto Cubo  
 P panel building system  
 Vendor Ensto Finland Oy



## Technical specification

---

### Others

ETIM Class: EC001285

### Dimensions

Net Weight: 0.239 kg

Size: 35 x 560

Weight: 0.24 kg

### ETIM 7

---

### Etim

Drill hole distance centrally: 540 mm

Height: 35 mm

Length: 550 mm

Material: Steel

Material thickness: 1 mm

Model: DIN rail (top hat rail) 35/7.5 mm

Punch shape: Long-slot

Surface finishing: Galvanized

## Packaging

---

### Default package

<b>Unit:</b>	PCE
<b>Package size:</b>	10
<b>Depth:</b>	30 mm
<b>Width:</b>	80 mm
<b>Height:</b>	600 mm
<b>Weight:</b>	2.39 kg
<b>Volume:</b>	1.44 l