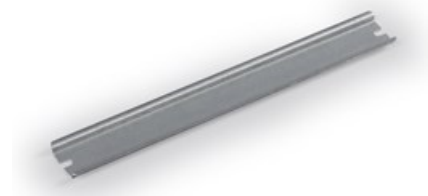


ENSTO

DR35340.5

DIN rail

Code DR35340.5
 GTIN 6418677176654
 ENumber
 Name DIN rail Ensto Cubo O
 For 600 mm side/middle with front panel,
 width 35 mm, DIN 46277/3
 Description Accessory for Ensto Cubo O and C
 thermoplastic enclosures and Ensto Cubo
 P panel building system
 Vendor Ensto Finland Oy



Technical specification

Dimensions

Weight: 0.11 kg
 Volume : 8.94 cm³
 Size: 35 x 350

Materials

Material: Galvanized steel

Ratings

ETIM 7: EC001285 Mounting rail

ETIM

ETIM

Punch shape: Long-slot
 Material thickness: 1 mm
 Drill hole distance centrally: 330 mm
 Height: 35 mm
 Surface finishing: Galvanized
 Material: Steel
 Model: DIN rail (top hat rail) 35/15 mm

Length: 340 mm

Packaging

Default package

Unit: PCS
Size: 10
Length: 30 mm
Width: 100 mm
Height: 315 mm
Weight (net): 0.11 kg
Weight (brt): 1.21 kg
Volume: 0.945