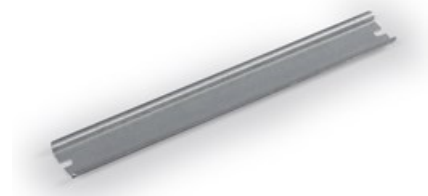


# ENSTO

DR35150.5

DIN rail

Code DR35150.5  
 GTIN 6418677164743  
 ENumber  
 Name DIN rail Ensto Cubo O  
 For 200 mm side, width 35 mm, DIN  
 46277/3  
 Description Accessory for Ensto Cubo O and C  
 thermoplastic enclosures  
 Vendor Ensto Finland Oy



## Technical specification

### Dimensions

Weight: 0.05 kg  
 Volume : 4.09 cm<sup>3</sup>  
 Size: 35 x 160

### Materials

Material: Galvanized steel

### Ratings

ETIM 7: EC001285 Mounting rail

### ETIM

#### ETIM

Punch shape: Long-slot  
 Material thickness: 1 mm  
 Drill hole distance centrally: 140 mm  
 Height: 35 mm  
 Surface finishing: Galvanized  
 Material: Steel  
 Model: DIN rail (top hat rail) 35/15 mm  
 Length: 150 mm

## Packaging

---

### Default package

Unit:	PCS
Size:	10
Length:	30 mm
Width:	230 mm
Height:	150 mm
Weight (net):	0.00306 kg
Weight (brt):	0.51306 kg
Volume:	1.035