

ENSTO

OPCP203013T

Cubo O enclosure

Code OPCP203013T

GTIN 6418677184352

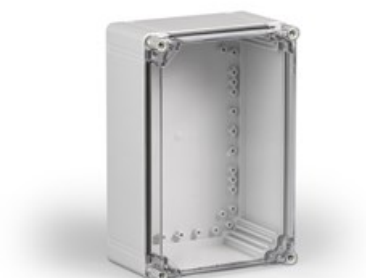
ENumber

Name Cubo O enclosure

Size 200 x 300 x 132 mm, plain sides,
transparent cover, PC

Description Ensto Cubo O is a series of medium to large size enclosures available with plain sides or metric knockouts. Special features of the series allow mounting the cover onto the back of the base and include adjustable elevators for the base corner slots, enabling plates and panels to be mounted at any height.

Vendor Ensto Finland Oy



Technical specification

Technical specification

Content: Enclosure base, cover, cover screws,
mounting screws

Dimensions

Weight: 1.35 kg
 Width: 200 mm
 Volume : 792.00 cm³
 Size: 200 x 300 x 132
 Height: 300 mm
 Depth: 132 mm
 Inner depth: 115.0 mm
 Outer cover height: 30 mm

Temperatures

Operating temperature: -40 ... +80 °C
 Short term temperature range: -40 ... +120 °C

Materials

Base:	Fiberglass reinforced polycarbonate
Cover:	Polycarbonate
Cover screws:	Polyamide
Gasket:	Polyurethane
Material selection:	Polycarbonate

Colors

Color:	Grey
--------	------

Mechanical

Impact strength:	IK 08
------------------	-------

Certificates

Standards:	EN 62208, GOST R
------------	------------------

Ratings

Degree of protection:	IP66/IP67
Flammability rating:	UL 746C 5 inch flame test
ETIM 7:	EC000261 Enclosure/switchgear cabinet (empty)

ETIM

ETIM

Height:	300 mm
Wall fastening possible:	true
Surface finishing:	Untreated
Colour:	Grey
With glazed door:	true
Impact strength:	IK08
Degree of protection (IP):	IP67
Depth:	132 mm
Width:	200 mm
Material:	Plastic
RAL-number:	7035
Suitable for outdoor set-up:	true
Mounting plate depth-adjustable:	true

Packaging

Default package

Unit:	PCS
Size:	1
Length:	325 mm
Width:	225 mm
Height:	140 mm

Weight (net):	1.349 kg
Weight (brt):	1.539 kg
Volume:	10.2375