

# PRYMA

## IP67 BOXES FOR INDUSTRIAL SOCKETS

Description: IP67 SURFACE BOX 2x13 (26) MOD. (TW)

Reference:

**1724GM**

### Characteristics:

Product type:	Boxes for industrial sockets
Exterior dimensions (Height x Width x Depth):	504x297x177 mm
Dimensions of the flush-fit gap (HxWxD):	-
Number of modules:	2x13 (26) DIN rail
Installation:	Surface
Color:	Grey RAL 7035
Window:	Transparent tinted window
Weight (Kg):	2,84
Cable entry:	-
Components:	-
Materials:	Halogen-free plastic materials. Frame and base: ABS. Transparent window: UV protection polycarbonate

### Technical data:

Degree of protection:	IP67
Resistance to impact:	IK08
Glow wire resistance:	650 °C
Ball pressure test:	70 °C
Ambient temperature range:	-25 °C / +40 °C
Maximum operating voltage:	1000 V AC / 1500 V DC
Double insulation:	Class II

### Certificates and standards:

Directive:	2014/35/EU
Standards:	UNE-EN 62208 and UNE-EN 61439-1 (as applicable)
Certificates:	



### Codes:

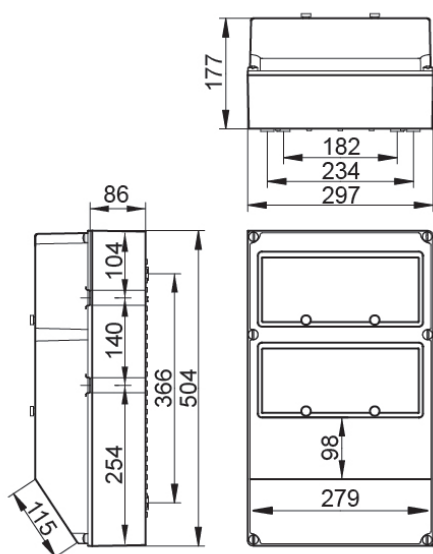
EAN:	8431044104003
Customs tariff number:	85.38.10.00
ETIM 6.0:	EC000379

# PRYMA

## IP67 BOXES FOR INDUSTRIAL SOCKETS

Description: IP67 SURFACE BOX 2x13 (26) MOD. (TW)

Reference: 1724GM



### Detailed drawing:

 <http://www.ide.es/downloads/planos/pdf/1724GM.pdf>

 <http://www.ide.es/downloads/planos/dxf/1724GM.dxf>

 <http://www.ide.es/downloads/planos/stp/1724GM.stp>

### Exterior dimensions (Height x Width x Depth):

504x297x177 mm

### Dimensions of the flush-fit gap (Height x Width x Depth):

-

### Sustainability:

RoHS - REACH

### Supply:

Supplied in individual cardboard packaging. When several items are sent together, they are bundled together with transparent film.

Packaging units: 2

### Product end of life:

It does not require specific recycling operations.

### Recommended applications:

Industrial and outdoor environments. Industrial sites, docks, swimming pools, garages, anywhere that requires a high degree of protection against dust, splashes and impacts.