

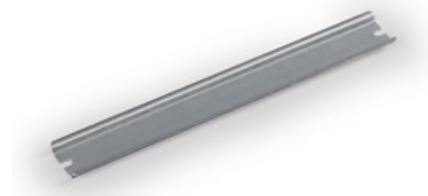
# ENSTO

DIN rail

DR35176.4

---

Code	DR35176.4
GTIN	6418677151057
Name	DIN rail Ensto Cubo D DIN rail, length 186 mm, width 35 mm, DIN 46277/3, galvanized steel
Description	Accessory for Ensto Cubo D thermoplastic enclosures
Vendor	Ensto Finland Oy



## Technical specification

---

### Others

ETIM Class: EC001285

### Dimensions

Net Weight: 0.059 kg

Size: 35 x 186

Volume : 4.75 cm<sup>3</sup>

Weight: 0.06 kg

## ETIM 7

---

### Etim

Drill hole distance centrally: 176 mm

Height: 7.5 mm

Length: 186 mm

Material: Stainless steel

Material thickness: 1 mm

Model: DIN rail (top hat rail) 35/7.5 mm

Punch shape: None

Surface finishing: Galvanized

## Packaging

---

### Default package

<b>Unit:</b>	PCE
<b>Package size:</b>	10
<b>Depth:</b>	40 mm
<b>Width:</b>	100 mm
<b>Height:</b>	230 mm
<b>Weight:</b>	0.59 kg
<b>Volume:</b>	0.92 l