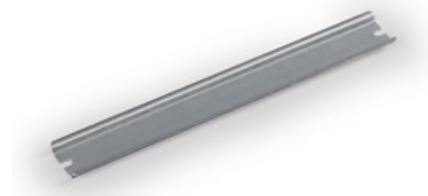


ENSTO

DIN rail

DR35160.4

Code	DR35160.4
GTIN	6418677151071
Name	DIN rail Ensto Cubo D DIN rail, length 170 mm, width 35 mm, DIN 46277/3, galvanized steel
Description	Accessory for Ensto Cubo D thermoplastic enclosures
Vendor	Ensto Finland Oy



Technical specification

Others

ETIM Class: EC001285

Dimensions

Net Weight: 0.053 kg

Size: 35 x 170

Volume : 4.34 cm³

Weight: 0.06 kg

ETIM 7

Etim

Drill hole distance centrally: 160 mm

Height: 7.5 mm

Length: 170 mm

Material: Stainless steel

Material thickness: 1 mm

Model: DIN rail (top hat rail) 35/7.5 mm

Punch shape: None

Surface finishing: Galvanized

Packaging

Default package

Unit:	PCE
Package size:	10
Depth:	40 mm
Width:	100 mm
Height:	220 mm
Weight:	0.53 kg
Volume:	0.88 l